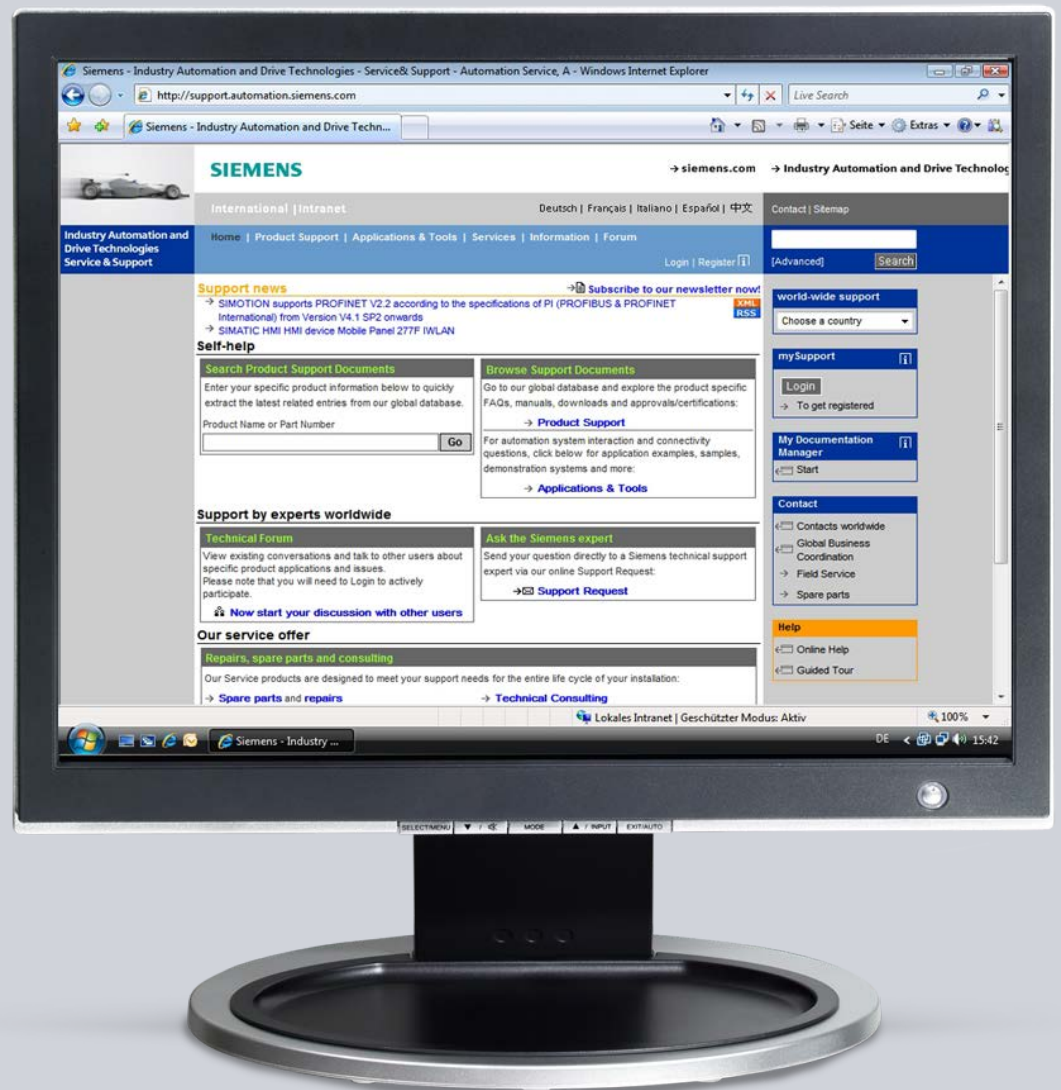


# Licenses for WinCC flexible and Panels

## WinCC flexible & Panels

FAQ • February 2015



# Service & Support

Answers for industry.

# SIEMENS

This entry originates from the Service & Support Portal of Siemens AG, Sector Industry, Industry Automation and Drive Technologies. The conditions of use specified there apply ([www.siemens.com/nutzungsbedingungen](http://www.siemens.com/nutzungsbedingungen)).

Go to the following link to download this document.

<http://support.automation.siemens.com/WW/view/de/27005215>

## Question

What should you watch out with regard to licenses for WinCC flexible and panels?

## Answer

Follow the instructions and notes listed in this document for a detailed answer to the above question.

## Contents

1	Licenses and License Management.....	4
1.1	Overview.....	4
1.2	Options and Services of WinCC flexible ES/RT.....	4
2	How Do You Transfer Licenses? .....	5
2.1	Which Software is Needed? .....	5
2.2	Transferring License Keys to an Operator Panel via Automation License Manager .....	6
2.3	Removing License Keys from an Operator Panel via Automation License Manager .....	9
2.4	Notes on Interface Configuration .....	11
3	License Key Backup.....	13
3.1	Which Software is Needed? .....	13
3.2	When Do You Have to Back Up License Keys? .....	13
3.3	Backup and Restore.....	13
4	Special Features of WinAC MP.....	14
4.1	License Keys for WinAC Types.....	14
4.2	License Keys for WinAC Versions .....	14
4.3	Other Special Features .....	14
5	Frequently Asked Questions .....	15
5.1	Why Does the Downloading of Your Licenses to the Operator Panel Fail? .....	15
5.2	How Do You Repair a Defective License? .....	15
5.3	Why is a License Invalid After Changing Time Zones? .....	15
5.4	Why are License Keys Not Recognized?.....	15
5.5	Where is the "Old" License Key Located after an Upgrade? .....	15
5.6	How Do You Retrieve a Lost License Key? .....	16
5.7	Why are Licenses of the Panel Not in the Backup? .....	16
5.8	Can You Use a License for WinCC flexible 2008 also for WinCC flexible 2007? .....	16
5.9	Can You Change the Versions of WinCC flexible by Replacing Licenses? (This does not apply for Micro and China Edition).....	16

# 1 Licenses and License Management

## 1.1 Overview

This document familiarizes you with the special aspects of licenses and license management when using WinCC flexible. The emphasis here lies on the utilization of the "Automation License Managers" ("ALM").

## 1.2 Options and Services of WinCC flexible ES/RT

Different licenses are needed for the various options and services in Runtime, such as "Sm@rtService" or the application "Recipes for PC Runtime Systems".

The document attached (License\_Key\_List\_e\_V1\_1.pdf) lists the licenses required for the various options and services in the WinCC flexible Runtime (RT) and in the WinCC flexible Engineering System (ES).

Table 1-1

WinCC flexible option			WinCC flexible			
Option	RT	ES	2004	2005	2007	2008
WinCC flexible / ChangeControl	-	O	X	X	X	X
WinCC flexible / Sm@rtService	O	-	X	X	X	X
WinCC flexible / Sm@rtAccess	O	-	X	X	X	X
WinCC flexible / OPC server	O	-	X	X	X	X
WinCC flexible / Audit	O	-	-	X	X	X
WinCC flexible / ProAgent	O	-	X	X	X	X
WinCC flexible / Recipes	O	-	X	X	X	X
WinCC flexible / Archives	O	-	X	X	X	X
WinCC flexible / SIMATIC Logon	O	-	-	-	X	X
SIMATIC WinAC MP	O	-	-	X	X	X

Key:

X Available

- Not available

O Option of WinCC flexible Runtime or WinCC flexible Engineering System

### Note

Compatibility information for the WinAC MP option is available here: [Compatibility Tool for Automation and Drive Technology](#) in the Support Portal, Entry ID 56699648.

## 2 How Do You Transfer Licenses?

### 2.1 Which Software is Needed?

Various software tools are available for handling the License Keys and Authorization:

- Automation License Manager (for License Keys and Authorizations)
- AuthorsW (predecessor of the ALM, for authorizations only)
- ProSave for the authorization of WinCE-based operator panels

This document focuses on the utilization of the Automation License Managers which is much more convenient to use and has many new functions compared to AuthorsW and ProSave.

Below is a summary of the individual utilities and how they are used.

Table 2-1

	Authorization		Licenses	
	Windows CE-based systems	PC-based systems	Windows CE-based systems	PC-based systems
Autom. License Manager	--	X	X	X
AuthorsW	--	X	--	--
ProSave	X	--	--	--

#### Note

The transfer of License Keys to Windows CE-based target devices is supported by version V2.1 onwards (included in the delivery package of WinCC flexible 2005, for instance).

If you use an older version of the Automation License Manager, such as the version in STEP 7 V5.1 SP2, you also have to install the WinCC flexible 2005 or ProSave software.

You can download ProSave in Entry ID [10347815](#).

When you purchase WinCC flexible 2005 onwards (Compact, Standard, Advanced or Runtime for PC systems or an options package for WinCC flexible 2005), automatically you receive the associated License Key which substitutes the previously used authorizations.

When you transfer a license key to the hard drive or to an operator panel, it enables the relevant functions for permanent use without any restrictions.

You can continue to use existing Authorizations for WinCC flexible 2004 Runtime and Runtime options (e.g. Sm@rt-Access) in WinCC flexible 2005. Exception: Operator panels (other than PC-based operator panels) that are only supported by WinCC flexible 2005 onwards, such as OP 177B.

If you possess a runtime license for a PC system for WinCC flexible 2004, this license can also run in WinCC flexible 2005. However, bear in mind that for legal reasons you have to use a new license for WinCC flexible 2005 or need to upgrade the WinCC flexible 2004 license to WinCC flexible 2005! Runtime options are not affected by this.

## 2.2 Transferring License Keys to an Operator Panel via Automation License Manager

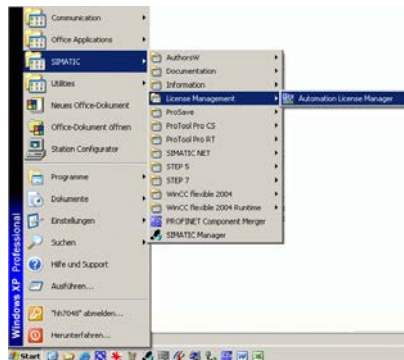
When you install WinCC flexible 2005 or ProSave V7.2, you can transfer license keys to an operator panel with the aid of the Automation License Manager.

You can find out below how to transfer a license key from a PC to an MP370 operator panel and how to remove an **existing** license key from an operator panel.

### Opening the Automation License Manager

Open the Automation License Manager via "Start > SIMATIC > License Management > Automation License Manager".

Figure 2-1



### Connecting the target system with the Automation License Manager and selecting the connection type

Click "Edit > Connect Target System > Connect Panel" to go to the "Connect Target System" menu. Select the appropriate operator panel and connection type there.

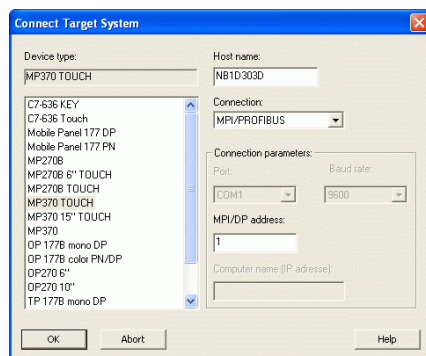
Bear in mind that the transfer settings in the Automation License Manager and on the target device must match.

The operator panel selected determines which connection types are supported. In this case, we have selected the MP370 and the "MPI/PROFIBUS" transfer path.

#### Note

Also check the interface parameterization used in the PG/PC interface and change this accordingly. For this see also section [2.4 Notes on Interface Configuration](#).

Figure 2-2



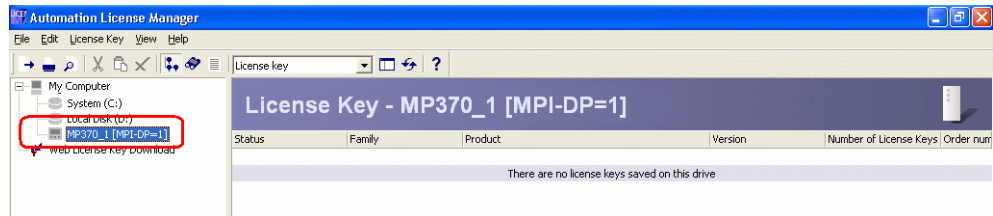
Click "OK" to confirm the entries. The selected operator panel (MP370) also appears in the project tree.

## 2 How Do You Transfer Licenses?

### Note

If the operator panel does not appear and there is no error present, then press the F5 key (to refresh the display).

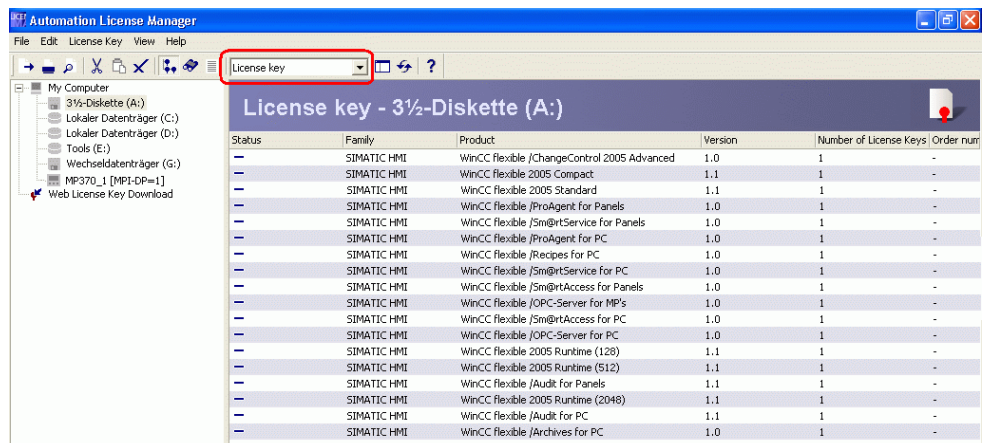
Figure 2-3



### Selecting the data medium with License Keys

Select the drive where the license key is located, "Drive A", for example. Other data media can also be used, a USB stick, for example. Select the menu item "License Keys" in the available standard views. All the license keys that are available on the drive now appear. In this case, all the license keys on the "A" drive.

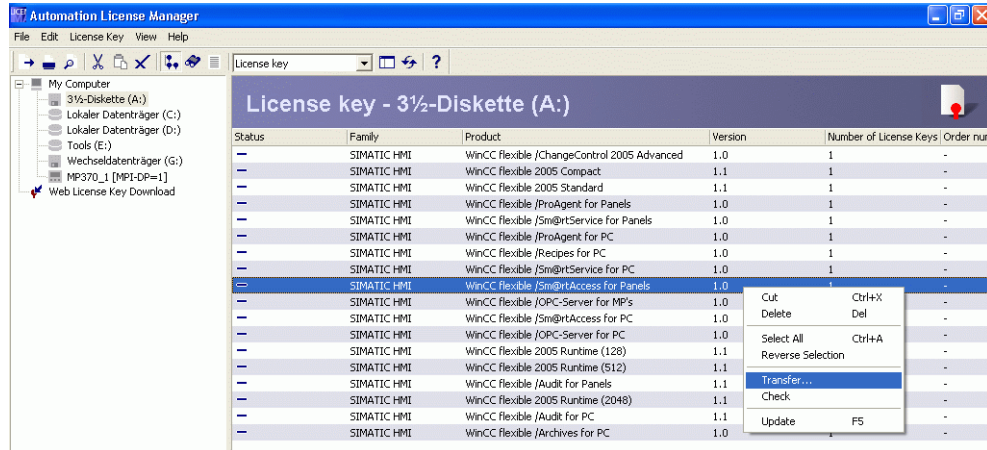
Figure 2-4



### Transferring License Keys

Select the license key which you would like to transfer to the operator panel. Right-click and select the menu item "Transfer...".

Figure 2-5



In the following pop-up menu, select the "target destination" to which the license key is to be transferred. The License Key is then transferred.

Figure 2-6

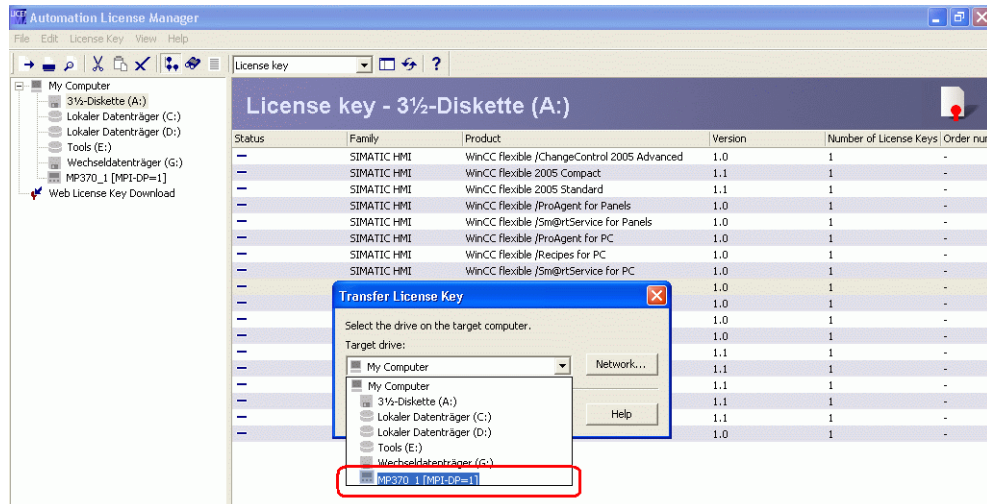
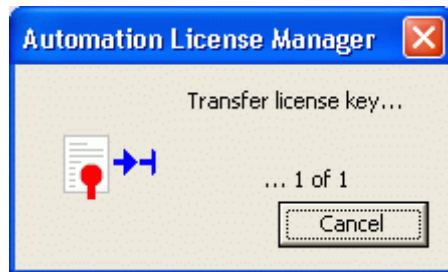


Figure 2-7

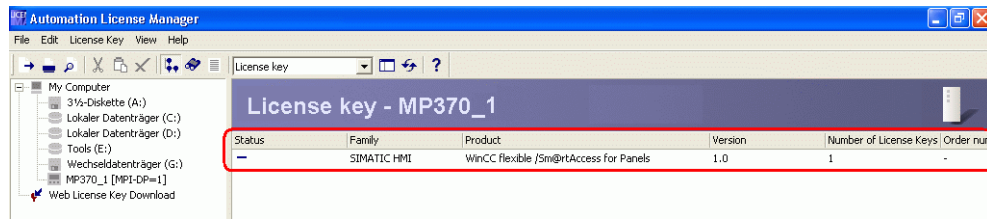


Once the license key has been transferred, you can check this in the Automation License Manager. In order to do this, highlight the operator panel and select the menu item "License Keys" in the available standard views. All the license keys that are available on the drive now appear.



## 2 How Do You Transfer Licenses?

Figure 2-8



### Note

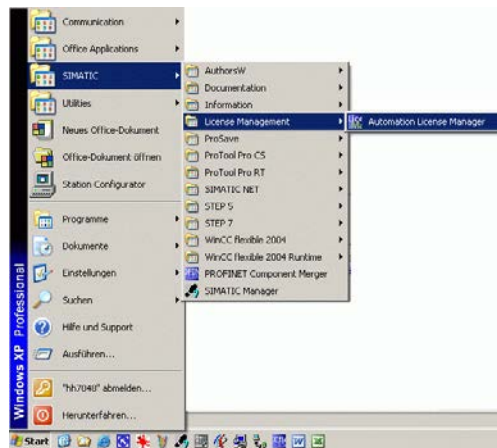
You can also transfer License Keys to the panel without WinCC flexible. More information about this is available in Entry ID [23238814](#).

## 2.3 Removing License Keys from an Operator Panel via Automation License Manager

### Opening the Automation License Manager

Open the Automation License Manager via "Start > SIMATIC > License Management > Automation License Manager".

Figure 2-9



The Automation License Manager opens.

### Connecting the target system with the Automation License Manager and selecting the connection type

Click "Edit > Connect Target System > Connect Panel" to go to the "Connect Target System" menu. Select the appropriate operator panel and connection type there.

Bear in mind that the transfer settings in the Automation License Manager and on the target device must match.

The operator panel selected determines which connection types are supported.

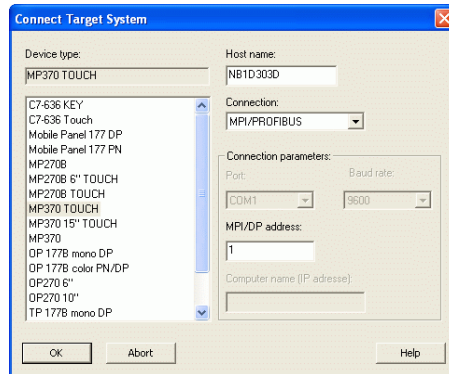
In this case, we have selected the MP370 and the "MPI/PROFIBUS" transfer path.

### Note

Also check the interface parameterization used in the PG/PC interface and change this accordingly. For this see also section [2.4Notes on Interface Configuration](#).

## 2 How Do You Transfer Licenses?

Figure 2-10

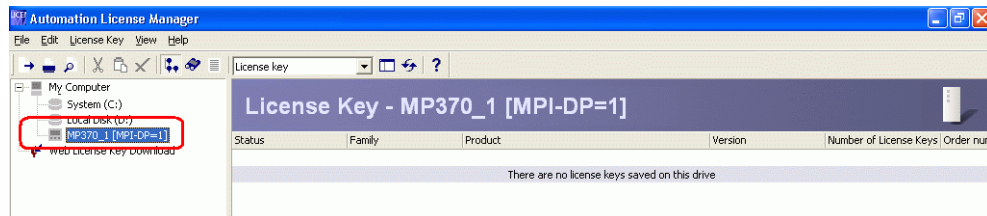


Click "OK" to confirm the entries. The selected operator panel (MP370) also appears in the project tree.

### Note

If the operator panel does not appear and there is no error present, then press the F5 key (to refresh the display).

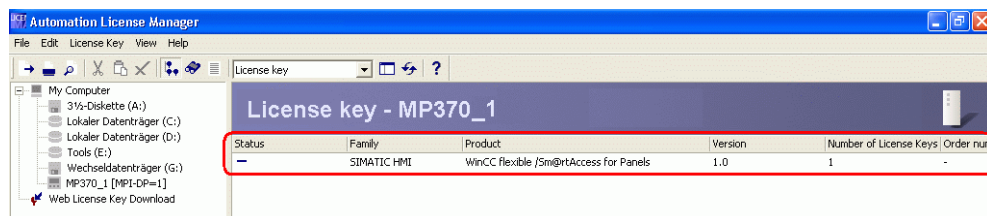
Figure 2-11



In the Automation License Manager highlight the operator panel from which you wish to delete the license key and select the "License Key" option in the available standard views.

All the license keys that are available on the drive now appear.

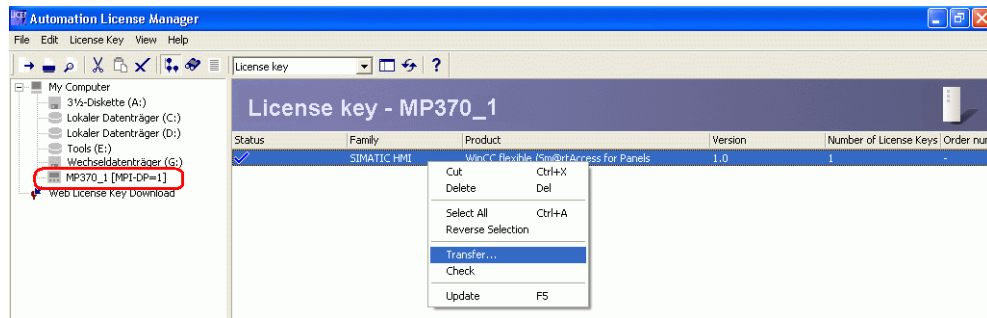
Figure 2-12



### Removing License Keys

Highlight the license key which you wish to delete from the operator panel. Right-click and select the menu item "Transfer...".

Figure 2-13

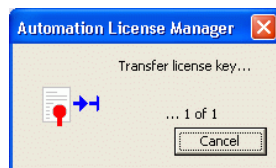


In the following pop-up menu, select the "target destination" to which the license key is to be transferred. In this case, the "A" drive. The License Key is then transferred. Other data media can also be used as target destination, a USB stick, for example.

Figure 2-14



Figure 2-15



**Note**

Ensure beforehand that the transfer parameters are correctly set on the panel and that the operator panel is in "transfer mode". For this see also section [2.4 Notes on Interface Configuration](#). Always keep the original storage location of the License Keys or the original Authorization floppy disks.

## 2.4 Notes on Interface Configuration

Follow the tips below for interface configuration for the transfer of licenses to an operator panel.

1. In the Automation License Manager under the menu command "Edit -> Connect Target System -> Connect Panel" you configure the PG/PC for the license download. The interface entered under "Connection" (Ethernet, MPI/PROFIBUS, PN/IE, ...) must match the interface configured on the operator panel for the transfer.  
You make the interface setting on the operator panel in the "Transfer" dialog in the Control Panel.
2. Open the "Set PG/PC Interface" dialog and in the "Access Path" tab you set the "Access point of the application" to "S7ONLINE (STEP 7)". (The dialog is in the Windows Control Panel or in the corresponding menu command of the SIMATIC Manager.)

## 2 How Do You Transfer Licenses?

---

3. Make sure that the settings of the Ethernet interfaces on the PG/PC and on the panel are compatible:
  - The IP address of PG/PC and Panel must be in the same address range
  - The subnet settings of PG/PC and Panel must be identical.
4. Make sure that at the time of license transfer the panel is either in Transfer mode or that the Runtime is active and communicating with a PLC.

## 3 License Key Backup

### 3.1 Which Software is Needed?

You can save and move the License Keys you purchase. You have two options in the case of panels:

- ProSave
- Automation License Manager

You can use the Automation License Manager to back up License Keys for software. To back up the License Keys on a storage medium using the Automation License Manager follow the instructions in the section entitled [Transfer License Keys](#) in the [Automation License Manager Programming and Operating Manual](#), Entry ID 102770153.

### 3.2 When Do You Have to Back Up License Keys?

You must back up the License Keys before you execute on of the following actions:

- When you install a new operating system.
- Format, compress or restore the hard disk
- When you start an optimization program that moves fixed blocks.
- Backup / Restore or boot the panel

### 3.3 Backup and Restore

How to do a Backup or Restore is described in the entry entitled [How do you backup/restore with a Windows-based panel?](#) (Entry ID [28928853](#)) in the Support Portal.

Whether the License Keys are saved during a backup procedure depends on your operator panel.

Authorizations and License Keys are lost when you do a "complete" backup/restore.

**Exception:**

The License Keys are saved when you do a "complete backup" on the following operator panel series.

- OP/TP 177B
- Mobile Panel 177
- OP / TP 277
- Mobile Panel 277
- MP 377

## **4 Special Features of WinAC MP**

### **4.1 License Keys for WinAC Types**

The License Key is assigned to a specific operator panel.

You cannot use the License Key of an operator panel of the higher performance range, like MP 277, with an operator panel of the lower performance range, like MP 177. It is possible to transfer with the ALM, but the License Key is not recognized.

### **4.2 License Keys for WinAC Versions**

License Keys of WinAC MP versions are upwards compatible. (Example: You can use the WinAC MP license 2007 also for 2008.)

### **4.3 Other Special Features**

- You have to use the ALM to upload the license to the MP.
- You can store multiple licenses of the same type simultaneously on one panel, but it is of no use.

## 5 Frequently Asked Questions

### 5.1 Why Does the Downloading of Your Licenses to the Operator Panel Fail?

You must set the connection partner correctly for successful license downloading. Incorrect settings lead to the display of error messages like "Connection Error" or "Transfer Error" when you attempt to download licenses.

Section [2.4 Notes on Interface Configuration](#) gives you an overview of the correct interface configuration for license downloading.

### 5.2 How Do You Repair a Defective License?

A license is deemed to be defective in the following cases:

- If the License Key can no longer be accessed in the storage location.
- If the License Key disappears when being transferred to the target drive.

You can use the Automation License Manager to repair a defective License Key. For this, use the "Restore" function or the "Restore Wizard" of the Automation License Manager. You must get in touch with [Customer Support](#) if you want to restore a license.

**Note**

The Runtime software runs perfectly even if the license is missing or defective. The system displays a message at short intervals informing you of the unlicensed mode.

### 5.3 Why is a License Invalid After Changing Time Zones?

The installed license no longer functions if you switch from a time referred to a full hour to a time not referred to a full hour.

Example: You switch the time zone from GMT +3:00 hours to GMT +3:30 hours.

**Remedy:**

Uninstall the License Key with a time zone setting that was set before you installed the License Key and reinstall the License Key with the new time zone setting.

### 5.4 Why are License Keys Not Recognized?

In this case, the reason might be an upgrade license. You might have installed the License Key, but have not yet made an upgrade. Help on this topic is available in section [2.5, "Upgrade Licenses"](#) in the [Automation License Manager Programming and Operating Manual](#), Entry ID 102770153.

### 5.5 Where is the "Old" License Key Located after an Upgrade?

If you want to upgrade an existing system, you can purchase an upgrade. When you make an upgrade, the existing Authorizations or License Keys are replaced by the new License Keys of the upgrade.

## **5.6 How Do You Retrieve a Lost License Key?**

You must make sure that you have the CoL in order to receive a new License Key. This is evidence that you are the owner of the license in the legal sense.

You must get in touch with [Customer Support](#) if you want to restore a license.

## **5.7 Why are Licenses of the Panel Not in the Backup?**

In the case of certain panels, the licenses are backed up also with a "Complete Backup". You can find additional information about this under "3.3 Spare Parts Backup and Restore".

## **5.8 Can You Use a License for WinCC flexible 2008 also for WinCC flexible 2007?**

Yes, it is possible to use all the functions of WinCC flexible without any warnings.

## **5.9 Can You Change the Versions of WinCC flexible by Replacing Licenses? (This does not apply for Micro and China Edition)**

Yes, this is possible. The WinCC flexible software is always the same. When you start the software, the license is queried and the software functions are changed to match the scope of the license. As from WinCC flexible 2007 it is thus possible to change the software versions by uninstalling and installing License Keys. The software does not have to be reinstalled.