

STEP 7 V5.5 - News

- Windows 7
- Projecting I-Device
- Shared Device
- User specific webpages
- Know-how protection
- Interface variables
- News with Report System Errors
- HW Update

Windows 7

- [Windows 7](#)
- [Projecting I-Device](#)
- [Shared Device](#)
- [User specific webpages](#)
- [Know-how protection](#)
- [Interface variables](#)
- [News with Report System Errors](#)
- [HW Update](#)

Windows 7

- Immediately STEP 7 V 5.5 supports the operating systems MS Windows 7 Professional, Ultimate and Enterprise in 32 Bit default installation.



High productivity through Windows 7

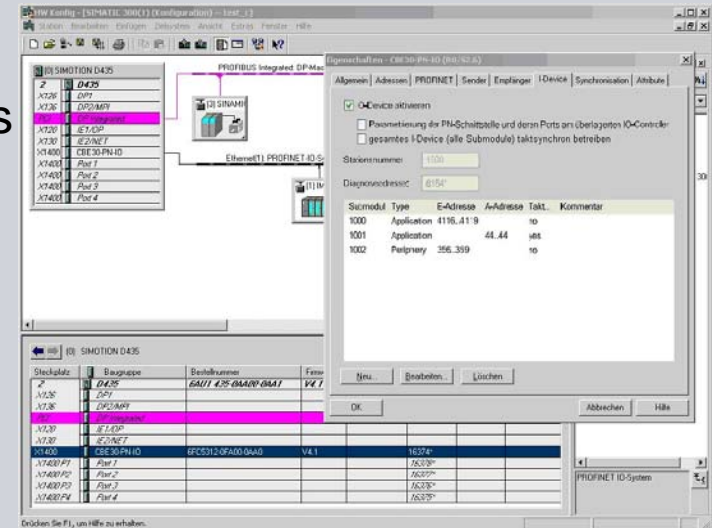
Projecting I-Device

- Windows 7
- Projecting I-Device
- Shared Device
- User specific webpages
- Know-how protection
- Interface variables
- News with Report System Errors
- HW Update

I-Device

One CPU can be set simultaneous as IO-Controller and I-Device.

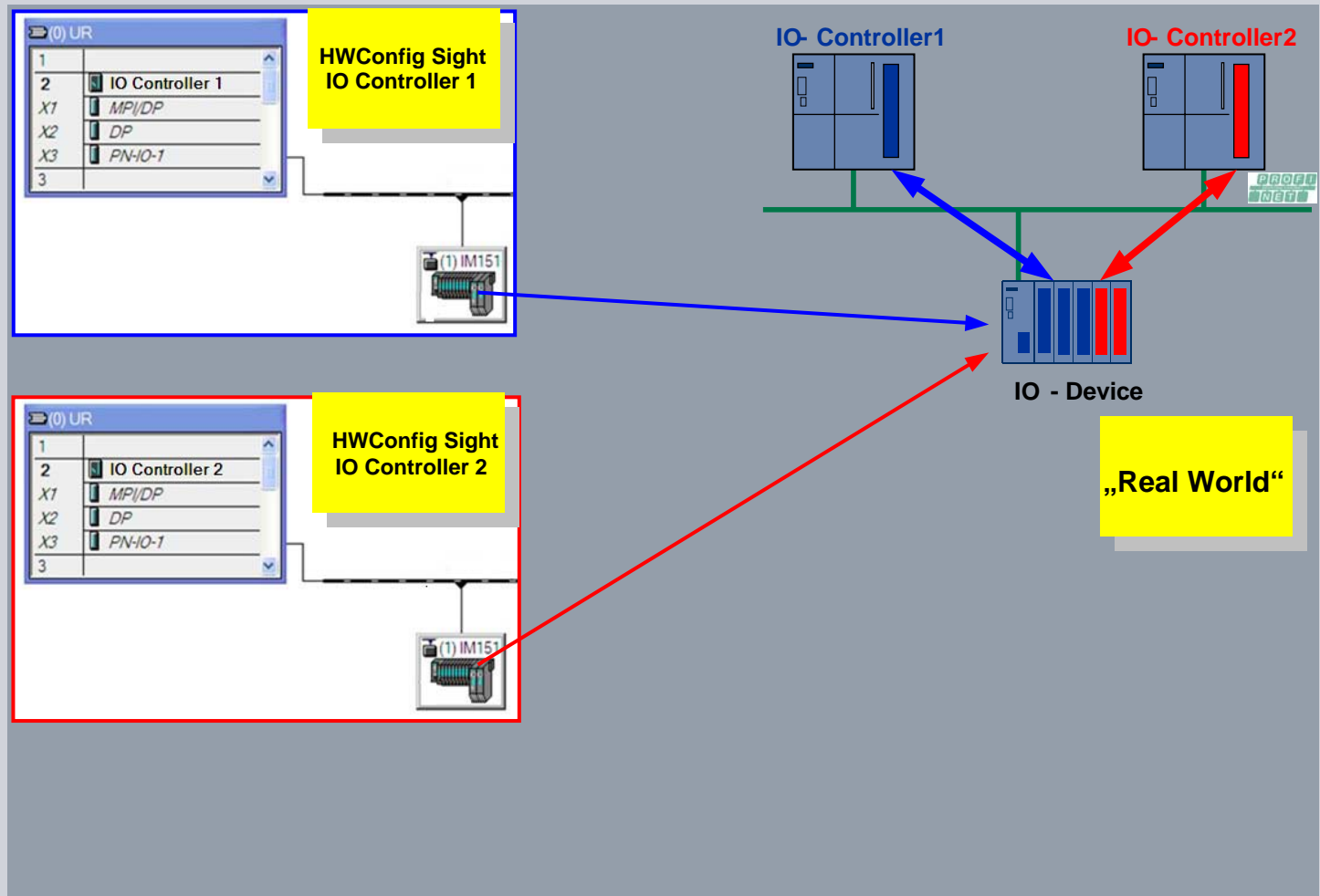
- Easy and transparent IO-coupling of CPUs
- Coupling of CPUs in various projects
- Integration under external controllers
- Reduction of PN-PN couplers (Transparent Net)



Less communication effort through direct access .

Shared Device

- [Windows 7](#)
- [Projecting I-Device](#)
- [Shared Device](#)
- [User specific webpages](#)
- [Know-how protection](#)
- [Interface variables](#)
- [News with Report System Errors](#)
- [HW Update](#)



Shared Device

- [Windows 7](#)
- [Projecting I-Device](#)
- [Shared Device](#)
- [User specific webpages](#)
- [Know-how protection](#)
- [Interface variables](#)
- [News with Report System Errors](#)
- [HW Update](#)

Shared Device

- Simultaneous access for more controllers to the same device
- Flexible allocation of channels and modules to different controllers
- Less cabling
- Less HW-effort
- Combination of standard- and fail-safe modules

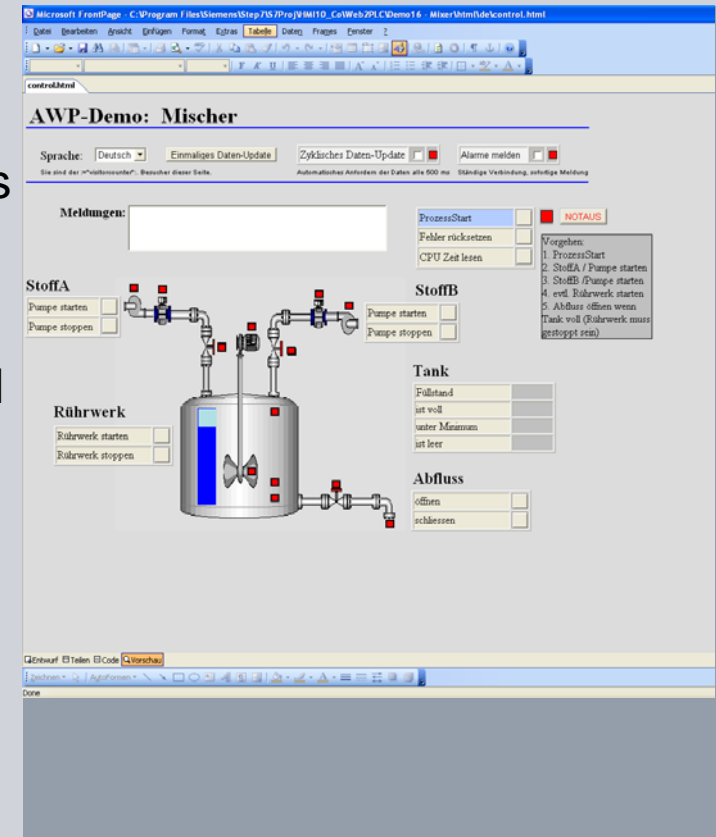
Shared Device allows multi-controller-operation with explicit addresses.

User-specific Web pages

- [Windows 7](#)
- [Projecting I-Device](#)
- [Shared Device](#)
- [User specific webpages](#)
- [Know-how protection](#)
- [Interface variables](#)
- [News with Report System Errors](#)
- [HW Update](#)

User-specific Web pages

- Web2PLC transforms user sides into data block information
- Web pages can be generated with standard HTML-editors and filed on the controller
- Part of the STEP 7-DVD

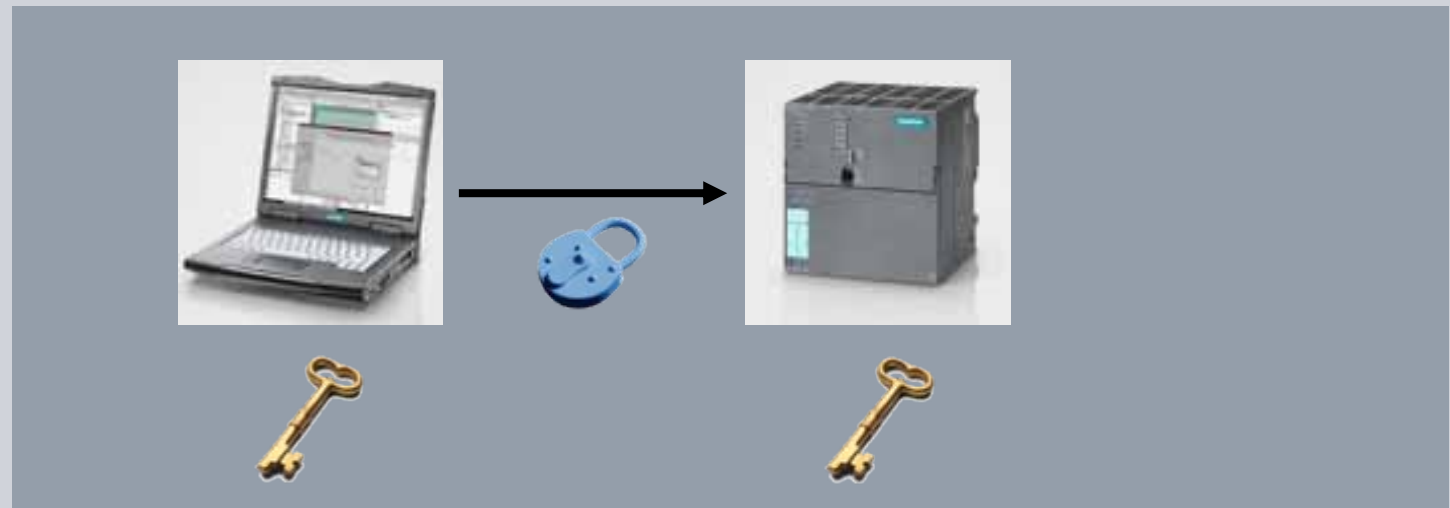


Superior diagnostics, easy service and faster monitoring directly with the controller.

Know-how protection due to module encryption

- [Windows 7](#)
- [Projecting I-Device](#)
- [Shared Device](#)
- [User specific webpages](#)
- [Know-how protection](#)
- [Interface variables](#)
- [News with Report System Errors](#)
- [HW Update](#)

Know-how protection due to module encryption



The program-code will be encrypted with 128 Bit on the PG, encoded transmitted and decrypted on the controller.

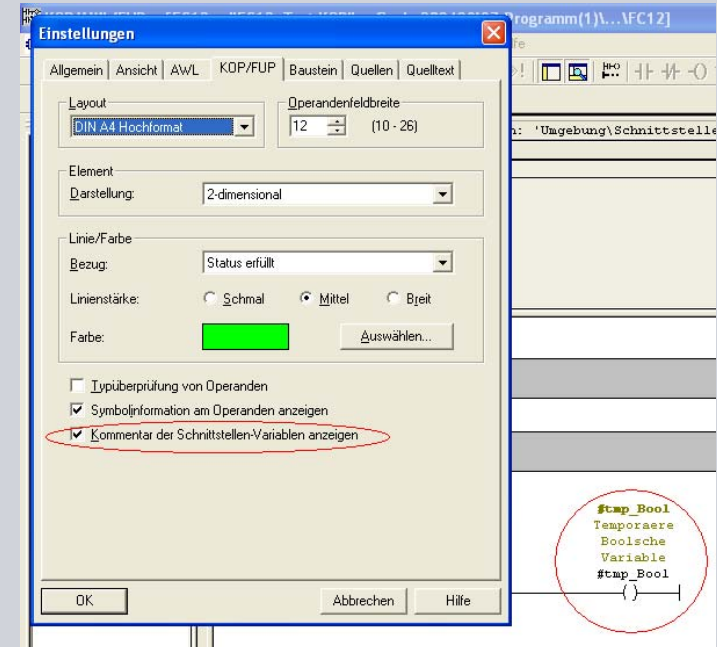
New know-how protection.

Display of comments for the interface-variables in the KOP/FUP/AWL editor

- [Windows 7](#)
- [Projecting I-Device](#)
- [Shared Device](#)
- [User specific webpages](#)
- [Know-how protection](#)
- [Interface variables](#)
- [News with Report System Errors](#)
- [HW Update](#)

Comments for the interface-variables in the KOP/FUP/AWL editor

- Immediately comments of the interface-variables can be displayed in the symbol information of the network



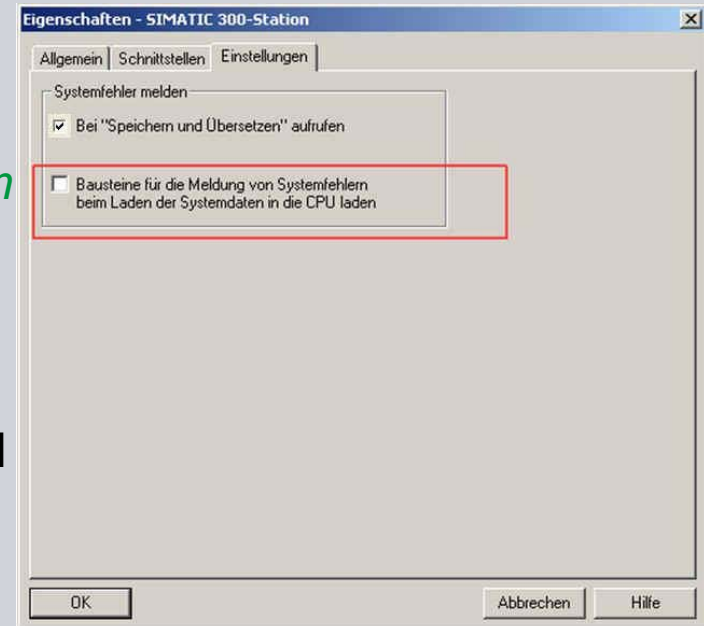
Consistent presentation of the comments in the language editors.

By downloading out of the HW-Config – automatic transmission of RSE-modules

- [Windows 7](#)
- [Projecting I-Device](#)
- [Shared Device](#)
- [User specific webpages](#)
- [Know-how protection](#)
- [Interface variables](#)
- [News with Report System Errors](#)
- [HW Update](#)

Innovations at notify system errors (RSE)

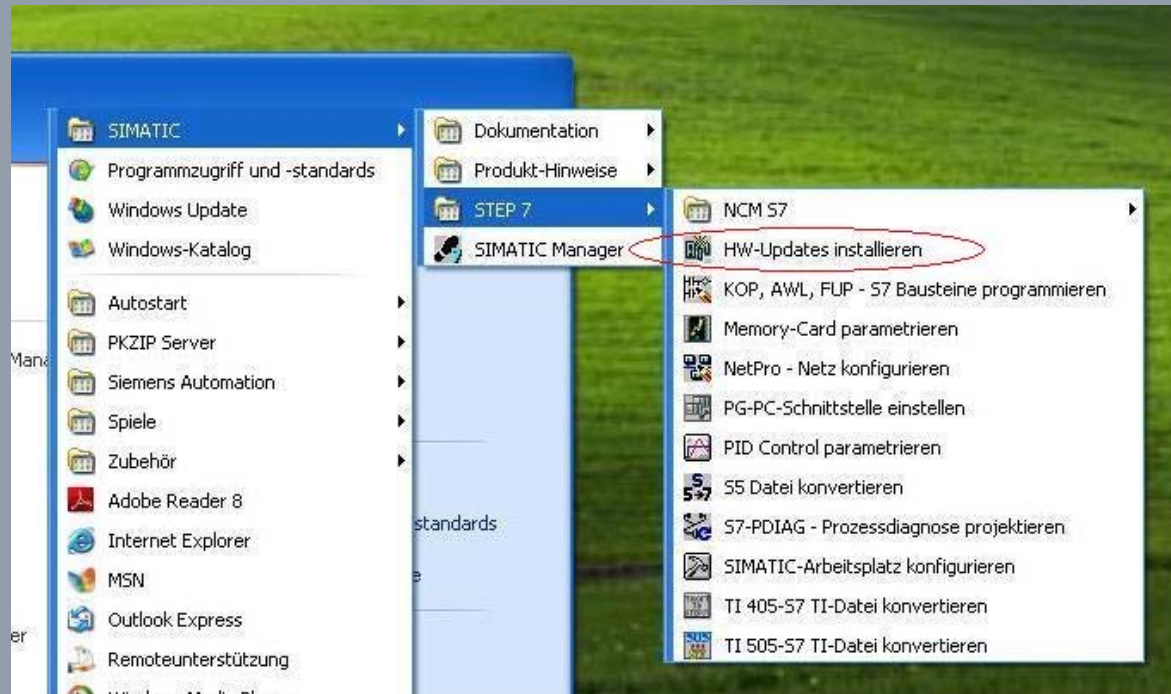
- With the function „*Report system errors*“ STEP 7 offers a comfortable way to display diagnostic information
- The messages will be generated automatically by STEP 7
- Immediately modules for the messages of system errors can be transmitted directly to the CPU. This guarantees the consistency



Run of “install HW-Updates” via the Windows-start menu

- [Windows 7](#)
- [Projecting I-Device](#)
- [Shared Device](#)
- [User specific webpages](#)
- [Know-how protection](#)
- [Interface variables](#)
- [News with Report System Errors](#)
- [HW Update](#)

Hardware Updates



Easy run of HW-updates directly via the Windows-start menu

Thank you for your attention!



Siemens AG
I IA AS FA PS

Gleiwitzerstr.555
90475 Nuremberg