

# SIEMENS

## SIMATIC S5

**A5E00108179**

Edition 11/2001

---

## STEP 5 PRINT

---

## Reference Guide

# Table of Contents

<b>1</b>	<b>General Remarks .....</b>	<b>3</b>
<b>2</b>	<b>Installation.....</b>	<b>3</b>
<b>3</b>	<b>Platform/Prerequisites .....</b>	<b>3</b>
<b>4</b>	<b>Limitations.....</b>	<b>3</b>
<b>5</b>	<b>Program Description .....</b>	<b>4</b>
5.1	Creating the print file with STEP 5.....	4
5.2	Printing with S5Print.....	4
5.3	Error Messages .....	7
5.4	Info Box.....	7
<b>6</b>	<b>Uninstalling programs.....</b>	<b>7</b>

## Copyright © Siemens AG 2001 All rights reserved

The reproduction, transmission or use of this document or its contents is not permitted without express written authority. Offenders will be liable for damages. All rights, including rights created by patent grant or registration of a utility model or design, are reserved.

Siemens AG  
Bereich Automatisierungs- und Antriebstechnik  
Geschäftsgebiet Industrie-Automatisierungssysteme  
Oestliche Rheinbrueckenstr. 50 D - 76181 Karlsruhe

## Disclaimer of Liability

We have checked the contents of this document for agreement with the hardware and software described. Since deviations cannot be precluded entirely, we cannot guarantee full agreement. However, the data in this document are reviewed regularly and any necessary corrections included in subsequent editions. Suggestions for improvement are welcomed.

Technical data subject to change

# 1 General Remarks

The program S5Print.exe offers printing of STEP 5 documents on printers installed under MS Windows.

Printed are the LS.INI files created in STEP 5.

# 2 Installation

On installing the STEP 5 package V7.2, the installation process is automatically run for the program S5PRINT.

Program file S5PRINT.EXE is then copied into the current STEP 5 systems directory, e.g. according to `C:\STEP5\S5_SYS\S5PRINT.EXE`.

A link to the program S5PRINT.EXE is created in your Windows start menu under **Start -> Simatic -> STEP 5**. From here, you can easily call up the program S5PRINT.

# 3 Platform/Prerequisites

The program runs under Windows 95/98/Me, Windows NT 4.0, Windows 2000 or Windows XP.

Prerequisite is that a local printer or a network printer is installed fully functional on your Windows OS.

You need an operable STEP 5 Version V6.x or V7.x to create the print file.

# 4 Limitations

The dialog language of the S5Print is English only, regardless of the installed Windows language version. However, the system functions called by S5Print, for example "Printer configuration" or "File selection" are displayed in the current Windows language.

## 5 Program Description

### 5.1 Creating the print file with STEP 5

The file to be printed must be available in a special Windows format. This is generated with the help of STEP 5 and the printer parameter file S5FILEDR.INI that is included in the program consignment:

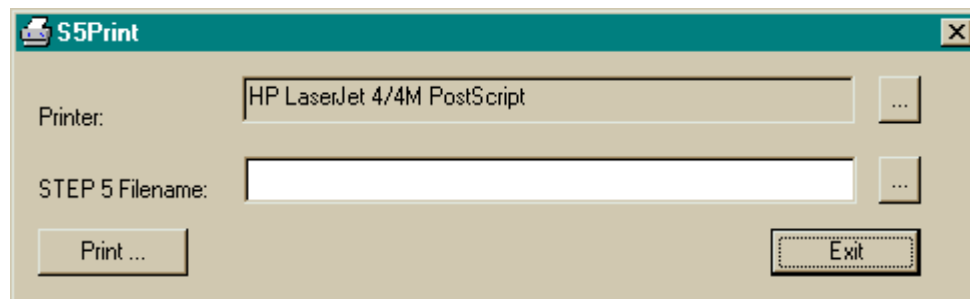
- Start STEP 5
- Select **File** → **Project** → **Set F4**
- 4 Select Documentation
- Select the printer file S5FILEDR.INI
- Select Documentation to File and enter a name for the file you want to print (??????LS.INI)
- Click on **Enter**

You can now use the known STEP 5 media to create your document and save it to the \*LS.INI file.

### 5.2 Printing with S5Print

Once you have created your print file in STEP 5, call the program S5Print.exe.

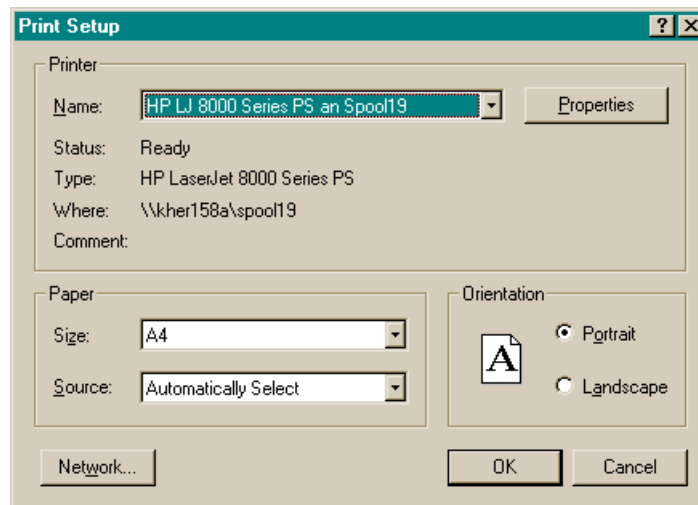
Example:



The program opens by displaying the default Windows printer.

If you have more than one printer installed you can select another printer in the "Printer:" selection window by clicking on the "... " button and then editing the "**Print Setup**" window.

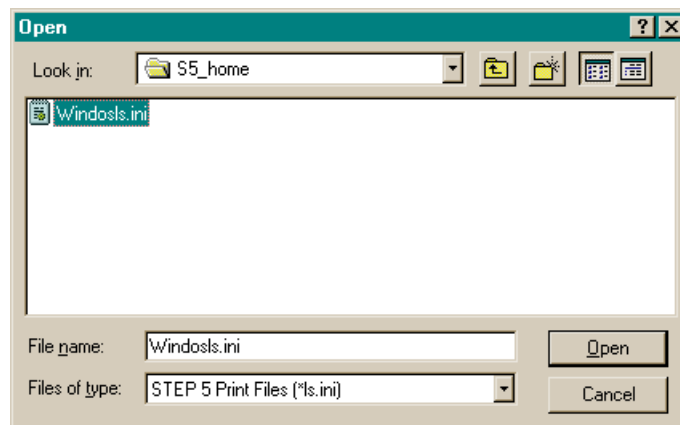
Example:



Select the STEP 5 print file

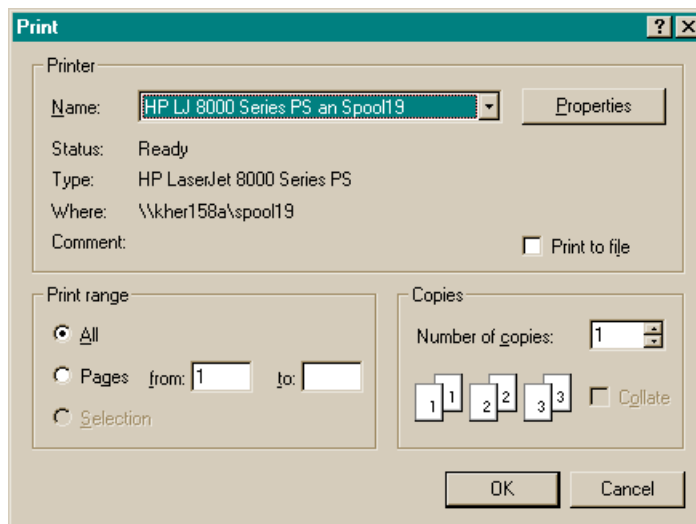
In the window row "STEP 5 Filename:" enter the file name for the STEP 5 file you want to print out. This is supported by a file selection box in an "Open" dialog window that you can open with a click on the corresponding "..." button.

Since STEP 5 usually saves the print file \*LS.INI to the STEP 5 "S5\_HOME" directory, this tab in its default configuration shows you all \*LS.INI files contained in this directory.



Confirm your print job with a click on the "Print ..." button in the S5Print window. The selected printer's system window "Print" opens.

Example:

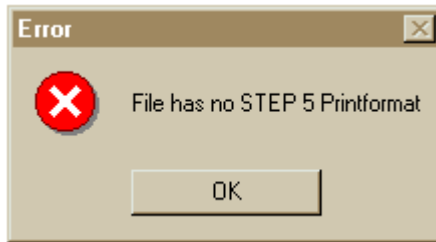


Here, you can specify the print job in detail by selecting, for example, the number of pages and copies to be printed. Confirm your entries with "OK" to start printing. Close the program S5Print with a click on the "Exit" button in the S5Print window.

### 5.3 Error Messages



This error message is displayed after you have clicked on "Print ..." without having selected a STEP 5 file for printing before.



This error message is displayed if the selected file is not in valid STEP 5 print format or if it has not been created with the printer parameter file S5FILEDR.INI.

System messages might also be also generated by the Windows printer driver.

### 5.4 Info Box

Click on the printer symbol in the title bar. Select "Info S5Print...". You are shown program version information.

## 6 Uninstalling programs

S5Print is removed from your computer when you uninstall the STEP 5 package. Additionally, you might have to delete the links you have created for this program on your Windows Desktop and in the Start menu.

